

THAI SHOWA PAXXS



Industrial Paper Bag



Film Products & Bulk Liner

COMPANY PROFILE

Thai Showa Paxxs has been manufacturing paper bags and bulk liners based on the same technical method and quality control as Showa Paxxs in Japan. We supply our packages to Thailand, China and Southeast Asia under the license of BOI (The Board of Investment of Thailand). We offer a variety of solutions in response to the demands of the times.



Company Name	Thai Showa Paxxs Co., Ltd.
Established	April 8, 1997
Capital	190,000,000 Baht
Shareholders	Showa Paxxs Corporation / Japan (90.00%) Marubeni Corporation / Japan (8.16%) Marubeni Thailand Co., Ltd. / Thailand (1.84%)
Main Business Activities	Manufacture and sales of heavy duty paper bags and film products such as bulk liner
Number of Employees	222 (as of October 31, 2019)
Certification	ISO 9001, ISO 14001



PAPER BAG

PRODUCTION PROCESS



Printing



Tubing



Sewing or Bottom Pasting

PAPER BAG

PRODUCT TYPE

Category	Type	Top of the Bag	Easy Open (Cut Tape)	Inner PE Film	Closing Method at Customer	Closing Material
Sewn Bag	Sewn Bottom Bag	Open		✓	Sewing, Over Tape	Sewing Thread, Kraft Tape, Over Tape
	Bag in Bag	Open		✓	Sewing	Sewing Thread, Kraft Tape
Easy Open Bag	Easy Open Bag	Open	✓	✓	Sewing, Over Tape	Sewing Thread, Kraft Tape, Over Tape
Pinch Bag	Pinch Bottom Bag	Open	✓	✓	Heat Seal	No Need
Pasted Bag	Pasted Bottom Bag	Open	✓	✓	Sewing, Over Tape	Sewing Thread, Kraft Tape, Over Tape
	Valve Bag	Closed (Inner Valve or Outer Valve)	✓		Heat Seal or By Hand	No Need
Bax	Bax (Bag + Box)	Open	✓		Sewing, Over Tape or By Hand	Sewing Thread, Kraft Tape, Over Tape or Adhesive Tape

OTHER PROCESSES

- Colored Film
- Aluminum Film / EVOH Film
- PE/PP Cloth Kraft Paper
- Laminated Kraft Paper
- Bleached (White) Kraft Paper
- Pin Hole Process, etc.

Sewn Bag

Sewn Bottom Bag

Features : This is a widely known sewn bag. You can select kraft paper or PE/PP cloth kraft paper for reinforcement. An inner tubular film can be automatically inserted by machine, which enables contamination-free. If you use an over tape, you can prevent contamination of a sewing thread. You can also select aluminum film for moisture proof properties. A long inner film bag can be inserted by hand.

Applications : Plastic resins, Chemicals, Food raw materials such as Bread crumb, etc.



Bag in Bag

Features : An inner tubular film can be automatically inserted by machine, which enables contamination-free. The inner bag can be removed from outer kraft paper with a score cut seal. End users can carry it into clean rooms.

Applications : Plastic resins, Chemicals, Food raw materials such as Premix, etc.



Easy Open Bag

Easy Open Bag

Features : This bag has an easy opening feature. It's easy to open at end users. An inner tubular film can be automatically inserted by machine, which enables contamination-free. If you use an over tape, you can prevent contamination of a sewing thread. In addition, end users can remove the inner bag and carry it into clean rooms.

Applications : Plastic resins, Chemicals, Food raw materials such as Premix, Starch, Flour, Creamer, Milk powder, etc.



Pinch Bag

Pinch Bottom Bag

Features : It's sealed with a hot melt adhesive, which can prevent leakage of fine powder. You don't have to use sub materials such as sewing thread and kraft tape, which enables contamination-free. You can also select aluminum film for moisture proof properties.

Applications : Plastic resins such as POLYACETAL, PVC, Fine powder products, etc.



Pasted Bag

■ Pasted Bottom Bag

Features : One bottom side is formed into a hexagonal shape. It becomes a rectangular shape after filling, which provides a high loading rate. An inner tubular film can be automatically inserted by machine, which enables contamination-free. It can be added an easy opening feature at the bottom. It's easy to open at end users. If you use an over tape, you can prevent contamination of a sewing thread. In addition, end users can remove the inner bag and carry it into clean rooms. You can also select aluminum film for moisture proof properties.

Applications : Plastic resins, Chemicals, Food raw materials such as Bread crumb, Creamer, Milk powder, etc.



■ Valve Bag

Features : Both bottom sides are formed into hexagonal shapes. They become rectangular shapes after filling, which provides a high loading rate. It can be added an easy opening feature at the top. It's easy to open at end users.

Applications : Plastic resins, Chemicals, Food raw materials such as Starch, Flour, etc.



Bax

■ Bax (Bag + Box)

Features : Bax is an assembly packaging bag for consumer packages. This is made of single ply thick kraft paper which provides resource saving and cost saving. It can be added an easy opening feature. It's easy to open at end users.

Applications : Sugar, Salt, Rice in packages, Frozen surimi block, etc.



Film



Inflation



Inflation to Winding



Winding

Bulk Liner



Circular Seal



Impulse Seal



Assembly

Features

- Sheet Width : 5,000 ~ 10,000mm (5 ~ 10m)
- Flat Width : 2,500 ~ 5,000mm (2.5 ~ 5m)
- Thickness : 100 ~ 400 micron (0.1 ~ 0.4mm)
- Layer : 3 Layers
- Applicable Resin : LLDPE, LDPE



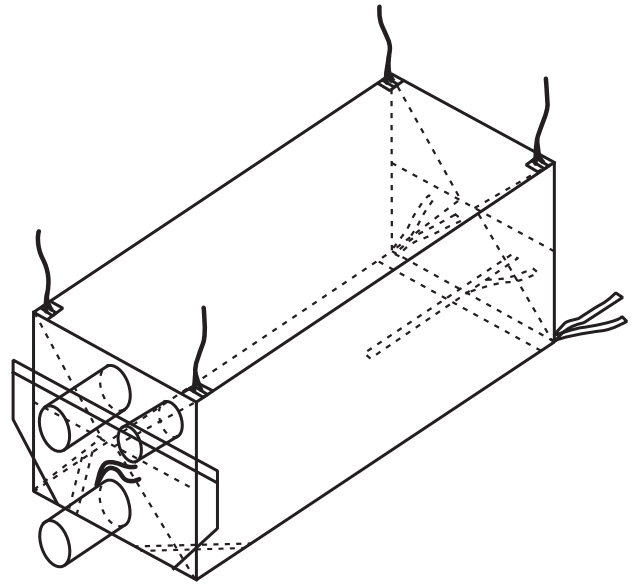
Sea Bulk Container Liner "BULCON"

Features

- Clean & Sanitary
- Speedy Charge & Discharge
- High Loading Efficiency
- Easy Handling
- Light Weight Material (LLDPE/LDPE made, 13-15kg/bag)
- Cost Saving

Applications

Plastic resin (PTA, BPA, PBT, PE, PP, PS),
Sugar, Tapioca starch, any other powder/pellet products



How to Use "Charge & Discharge"



1. INSTALLATION PROCESS

Hang "BULCON" at each corner of container.
Place steel bars at front side to support.

2. CHARGING PROCESS

Fill air inside to inflate "BULCON"
and charge product by air.

3. DISCHARGING PROCESS

Lift up container and discharge product
from discharging spout.



Thai Showa Paxxs Co., Ltd.

Eastern Seaboard Industrial Estate (Rayong) 64/14, 18 Moo 4, Off Highway No.331 Road, Tambol Pluakdaeng, Amphur Pluakdaeng, Rayong 21140, Thailand

Tel : +66(0)38-954-507~10 Fax : +66(0)38-954-511

Website : www.showapaxxs.co.th

E-mail : info@showapaxxs.co.th